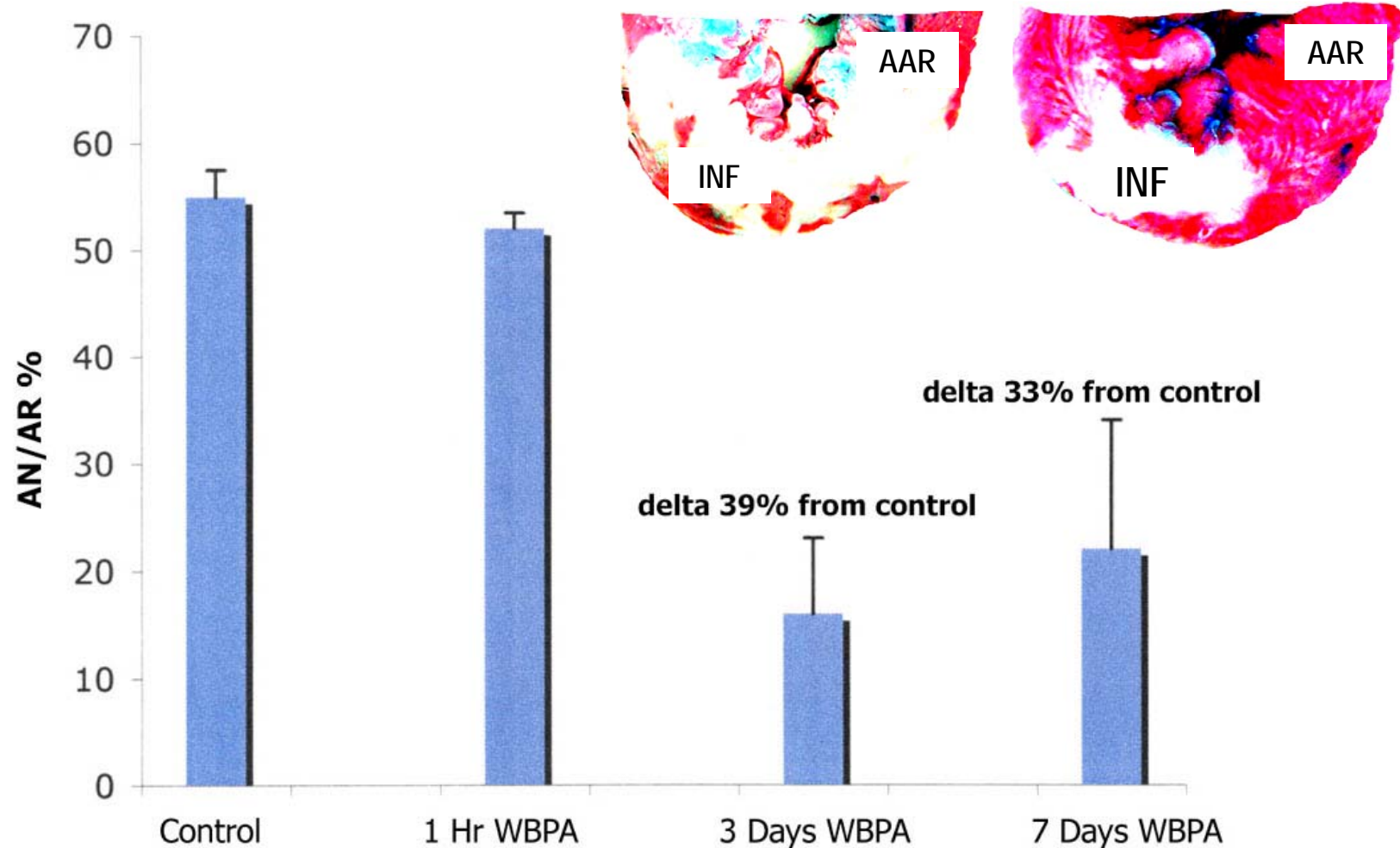


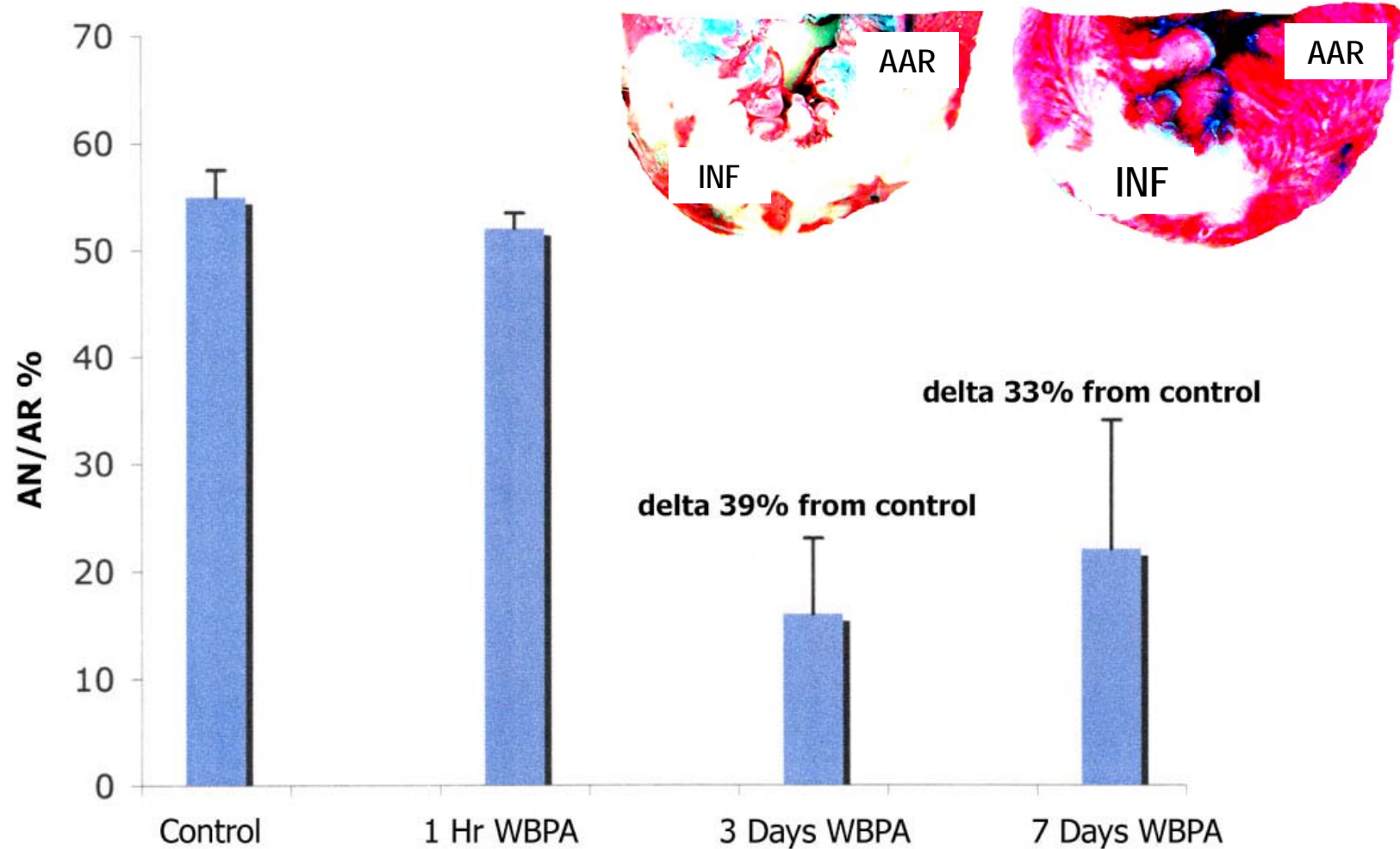
## Area Necrosis / Area at Risk % Ligation of Anterior Descending Coronary Artery 30 Minutes, Reperfusion 2 hours



Presented at the 2008 American Heart Association Conference by Dr. Tony Adams. In summary, the picture above represents the effects of preconditioning rats by using WBPA prior to inducing a massive myocardial infarction (heart attack) versus rats with no preconditioning. By providing three consecutive days of WBPA prior to the induced myocardial infarction, the damage to the heart was reduced by 39%.

## 壞死面積 / 處於危險中的面積(%)

冠狀動脈前降支結紮 30 分鐘, 再灌注 2 小時



此為Tony Adams醫生於2008年美國心臟協會研討會中所提出。總而言之, 上圖表現出, 在老鼠引發大規模心肌梗塞(心臟病發作)前, 使用WBPA(全身周期性加速度)所產生的作用, 相對於未使用老鼠的反應。引發大規模心肌梗塞(心臟病發作)前, 連續3天使用WBPA(全身周期性加速度), 使得對心臟的損害降低39%。